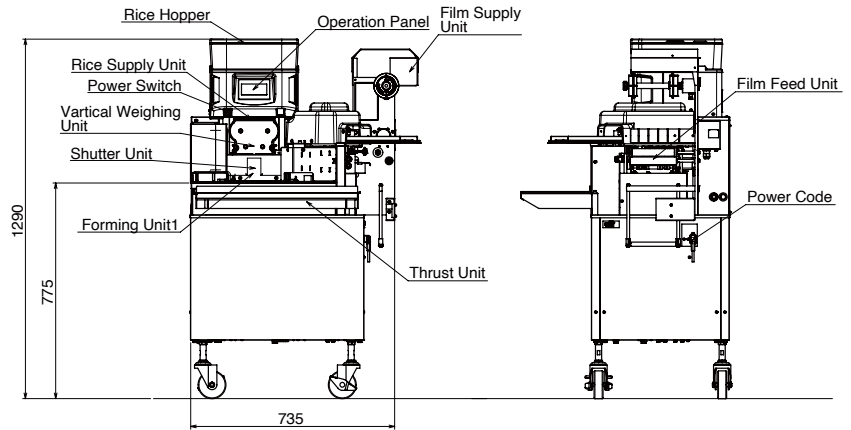
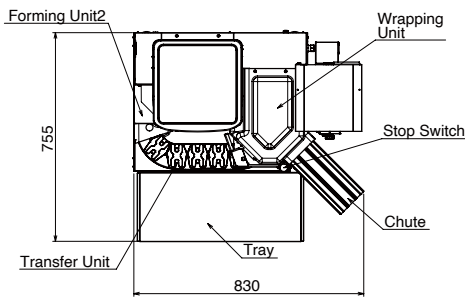
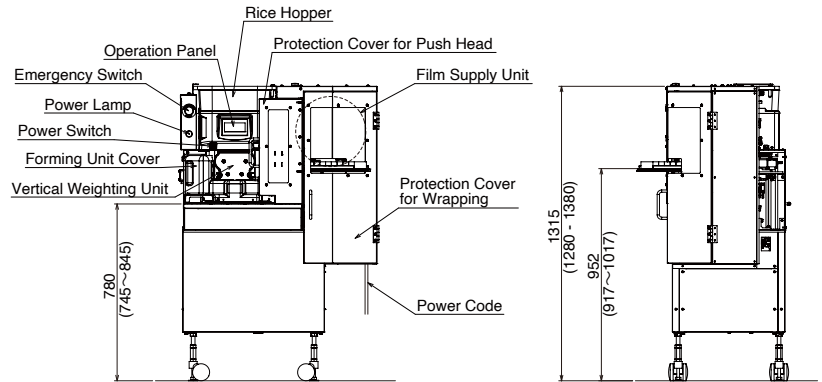
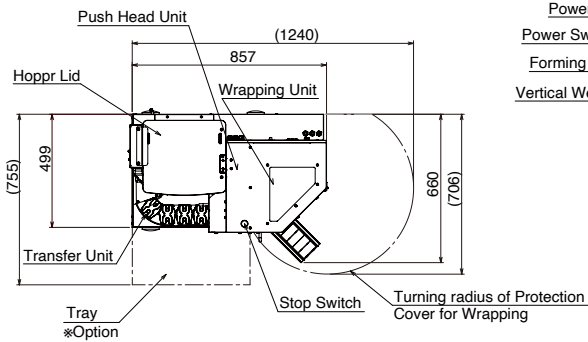


## ■Dimensions

### SGP-SNB-ET



### SGP-SNB-CE



## ■Specification

|                             |  |
|-----------------------------|--|
| Model                       | SGP-SNB-ET (Meets UL/NSF standards)<br>SGP-SNB-CE (Applied to CE & UKCA Regulation)                                  |
| Capacity                    | 1000, 1200, 1400, 1600, 1800, 2000 pcs./hr. (selectable)   |
| Machine Dimensions          | SGP-SNB-ET: 830W×755D×1290H mm<br>SGP-SNB-CE: 857W×660D×1280-1380Hmm<br>*Height becomes +5mm when the adjuster fixed |
| Power                       | Single-phase, AC100-240V, 50/60Hz<br>SGP-SNB-ET: Maximum Current 1.90A   |
| Power Consumption           | SGP-SNB-ET: 170W<br>SGP-SNB-CE: 230W (without Optional Items)  |
| Rice Hopper Capacity        | Approx. 6.5kg of cooked rice   |
| Rice Ball Size              | 18, 20, 22, 25g (Selectable)   |
| Wrapping Dimensions         | 68L×35W×30Hmm  |
| Wrapping Film Specification | 135mm width, 30μ thickness   |
| Machine Weight              | SGP-SNB-ET: 125kg / SGP-SNB-CE: 150kg *without Optional items  |
| Optional Items              | SGP-SNB-CE: Tray   |

## ■Features

- 2 in 1 design (Sushi Forming & Wrapping).
- Fluffy perfect rice ball are made by Suzumo innovative technology.
- User Friendly LCD touch panel.
- Easy to assemble/disassemble food contacting parts for cleaning.
- Just pull both sides of film to enjoy the Sushi (Patented).



\* Capacity expresses the machine's performance capability. The actual result may vary depending on the operator. \* Designs and specifications subject to change without notice.

### Suzumo Machinery Co., Ltd. Global Business Division

2-23-2, Toyotamakita, Nerima-ku, Tokyo 176-0012, Japan  
Tel. +81 3-3993-1407 Fax. +81 3-3993-1756  
e-mail overseas@suzumo.co.jp URL <http://www.suzumokikou.com>

< Contact in North America >

### Suzumo International Corporation

Head Office : 1815 W. 205th Street, Suite 101 Torrance, CA 90501 U.S.A.  
Tel. +1 310-328-0400 Fax. +1 310-328-2700 e-mail sic@suzumokikou.com

East Office : 375 North Street, Unit K, Teterboro, NJ 07608 U.S.A.  
Tel. +1 201-568-1900 e-mail sic@suzumokikou.com

< Contact in Singapore >

### Suzumo Singapore Corporation Pte. Ltd.

421 Tagore Industrial Avenue #04-11 Tagore 8, Singapore 787805  
Tel. +65 6254-2080 Fax. +65 6254 2086 e-mail sales@suzumo-sg.com